

A PROPERTY FACTSHEET · SANDUR, KARNATAKA

# Hampi 1800

A RESTORED HERITAGE RETREAT NEAR THE RUINS

*A quiet, deeply considered heritage villa built on the legacy of one of the residences of the royal Ghorpade family of Sandur, Seclude Hampi 1800 sits as a calm counterpoint to the UNESCO World Heritage ruins of Hampi just down the road.*

---

6

BEDROOMS  
HERITAGE ROOMS

18

SLEEPS  
MAXIMUM OCCUPANCY

50km

TO HAMP  
UNESCO HERITAGE

## THE RETREAT

# A heritage home, *quietly restored.*

Seclude Hampi 1800 is a beautifully restored six-bedroom heritage retreat near the ancient ruins of Hampi, in Sandur. Once a residence of the royal family of Sandur, it keeps a quiet magnificence rooted in the region's cultural legacy — surrounded by open gardens and palm trees, pairing old-world ambience with modern comfort.



*A restored royal residence, wrapped in palm gardens.*

360° [TAKE THE VIRTUAL TOUR](#)

### THE SIX BEDROOMS

01 Tungabhadra Blue

02 Kishkindha Green

03 Lotus Pink Private Balcony

04 Matanga Purple Private Balcony

05 Sugriva Red

06 Bazaar Yellow Private Balcony

VIDYANAGAR · VDY

45 km

~1 hr drive

BENGALURU · BLR

340 km

~5.5 hr · NH 48

HAMPI RUINS

50 km

~1.5 hr scenic

HOSPET · RAIL

33 km

~50 min

# Named for *Hampi's legends.*

Three rooms named for the river, the mythic forest kingdom, and the lotus — the first we'd point you to.

## 01 Tungabhadra Blue — *River blues*

[VIRTUAL TOUR](#)



## 02 Kishkindha Green — *Garden view*

[VIRTUAL TOUR](#)



## 03 Lotus Pink — *Suite with Private Balcony*

[VIRTUAL TOUR](#)



# Colour & *character.*

Three more, full of colour and heritage detail — a regal four-poster, bold reds, and sunlit yellow.

## 04 Matanga Purple — *Mini suite Private Outdoor*

[VIRTUAL TOUR](#)



## 05 Sugriva Red — *Pool view*

[VIRTUAL TOUR](#)

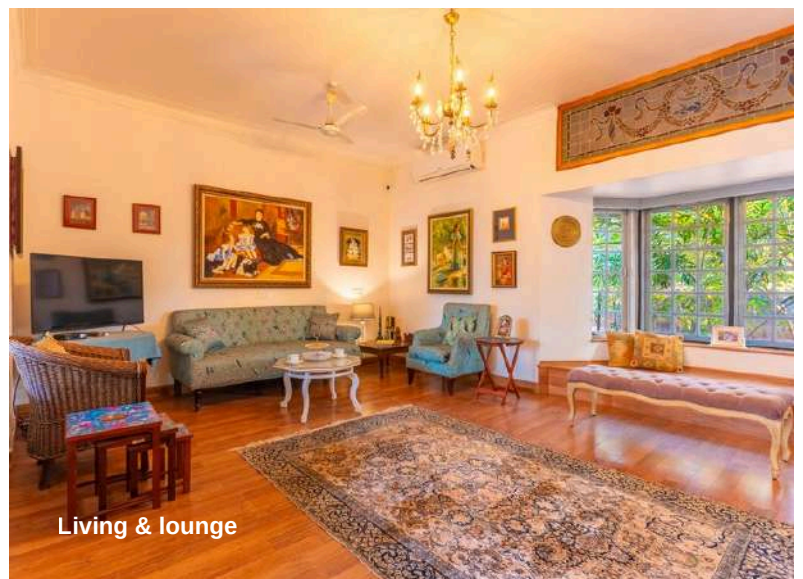
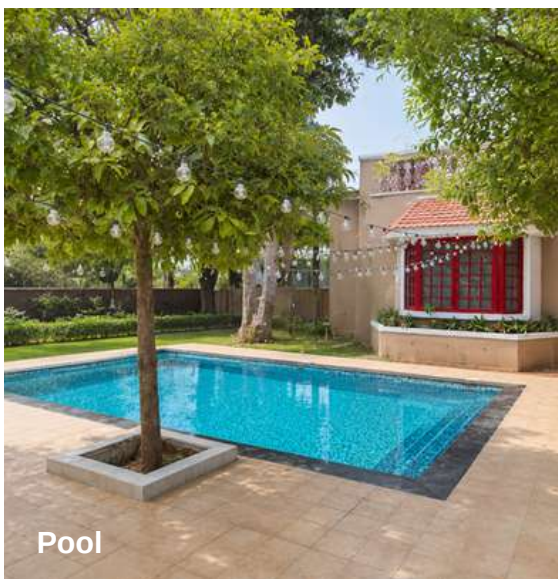


## 06 Bazaar Yellow — *Suite with Private Balcony*

[VIRTUAL TOUR](#)



# Gardens, terraces & a heritage home.



# The Seclude *Table.*

Meals are served in the heritage dining hall — under chandeliers, amid old-world charm. A fully staffed kitchen, a standardised menu, and specially curated meals for groups on request.



## THE SECLUDE TABLE

Dine in with a view.

Breakfast

08 – 10 am

*i.* [À la carte menu](#)

Lunch

01 – 03 pm

*ii.* [Things to do](#)

Dinner

08 – 10 pm

Recharge mode — all services pause at 10 pm and resume at 8 am. No outside catering; the kitchen is not guest-accessible. Specially curated meals for groups with advance notice.

SECLUDE EXPERIENCES · AT AN ADDITIONAL COST

# Make it *a moment.*

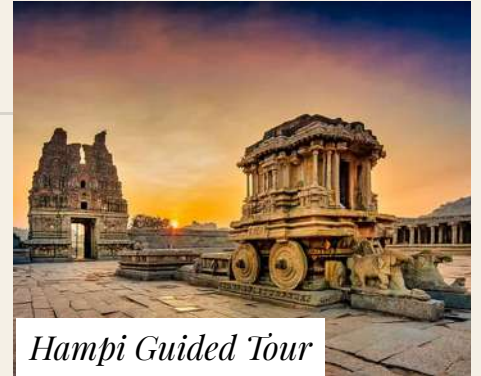
Curated experiences, arranged on request with the property manager — to celebrate, to gather, or to make an evening one to remember.



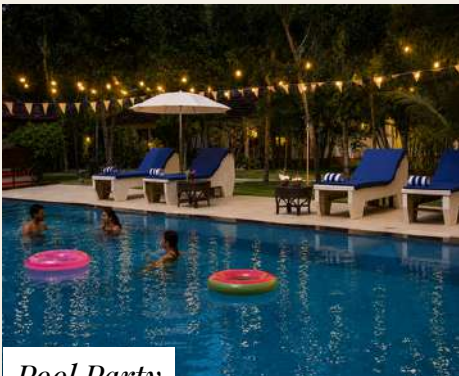
*Movie night*



*Picnic*



*Hampi Guided Tour*



*Pool Party*



*Special occasions decor*



*Barbeque*

## THINGS TO DO · TEMPLES & RUINS OF HAMPI



LIVING TEMPLE  
Virupaksha Temple



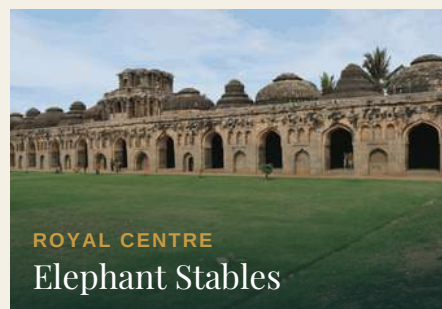
VIJAYANAGARA PEAK  
Vijaya Vitthala Temple



THE ICON OF HAMPI  
The Stone Chariot



ZENANA ENCLOSURE  
Lotus Mahal



ROYAL CENTRE  
Elephant Stables



ANCIENT MARKET STREET  
Hampi Bazaar

## ALSO NEARBY

·Anegundi Village   Sandur Fort   Coracle ride · Tungabhadra   Sanapur Lake   Sunset · Hemakuta Hill

## AMENITIES, ADD-ONS & POLICIES

# Good to know.

Electric kettle

Air-conditioning

Geyser · hot water

Wi-Fi

TV

Hair dryer

Mini Fridge in Suites

### HOUSE RULES

- No smoking or hookah inside the rooms.
- Meals are served in the dining area during posted hours.
- No outside catering; the kitchen is not guest-accessible.
- Linen & towels changed every two days; toiletries refreshed daily.
- Please notify any allergies or dietary needs in advance.
- A valid photo ID is required at check-in for all guests.

### CHILD POLICY

0 – 5 years *Complimentary*

Above 5 years *₹2,000 / night*

- Children 0–5 stay complimentary, without an extra mattress.
- Above 5, an extra mattress is ₹2,000 each — inclusive of taxes.
- Driver accommodation is not available on property.

*Unwind by the pool after a day of exploring the heritage city.*



## GETTING THERE

# Hampi 1800 in *Sandur*



Hampi 1800 · Sandur · Parking on site

### 01 Via Vidya Nagar Airport *45km*

1-1.5hrs

**Kempegowda International  
Airport (Bangalore)** *5.5hrs*

### 02 By road Via Hampi *50km*

A scenic 1.5hr drive from Hampi

### 03 Via Train *33km*

Hospet Junction - 50min

### 04 Via Bus

Hospet KSRTC Bus Stand - 1hr

## POLICIES

Check-in

*02:00 pm*

Check-out

*11:00 am*

Last order

*10:00 pm*

Quiet from

*9:30 pm*

- Transfers from airport or station can be arranged at extra cost.
- Parking is available on property.
- Damage or breakage of property, linen or crockery is billable.
- Billable items are settled from the deposit or invoiced separately.

## PLAN A STAY

# Get in *touch.*

A quiet collection of retreats across India. To plan a stay at Hampi 1800, reach us directly.

### RESERVATIONS

[sales@seclude.in](mailto:sales@seclude.in)

Mon – Sat · 9 to 7 IST

### BY PHONE

+91 9318490868

Call or WhatsApp

### ONLINE

[seclude.in](https://seclude.in)

360° VIRTUAL TOUR [virtuelle.io/Hospitality/Seclude-Hampi](https://virtuelle.io/Hospitality/Seclude-Hampi)