



# Seclude Nahan

Nahan Bantony Cottage





## SECLUDE NAHAN BANTONY COTTAGE

Seclude Nahan Bantony Cottage, a heritage gem in serene Nahan, Himachal. Once a Maharaja's retreat, now a 8-room Seclude haven where Old-world charm meets modern comfort. Each room tells a tale, adorned with warm hues, antiques, and art, the dining room, a canvas of classic authors and a Entertainment hall with games and cinematic nights.

Step outside to lush gardens framing mountain vistas, a sanctuary of peace. A mere five-hour drive from Delhi, it's a haven for retreats, romantic getaways, and forest adventures. Your story begins at Seclude Nahan.



[Click here](#)

India

# Getting there



Chandigarh Airport - 84 kms away  
from Seclude Nahan



Delhi is 266 kms away by road  
from our property



Kalka Railway Station- 90 Kms  
Chandigarh Railway Station- 81 Kms



Transfers to and from the airport,  
or railway station (at an  
additional cost)



Private parking available

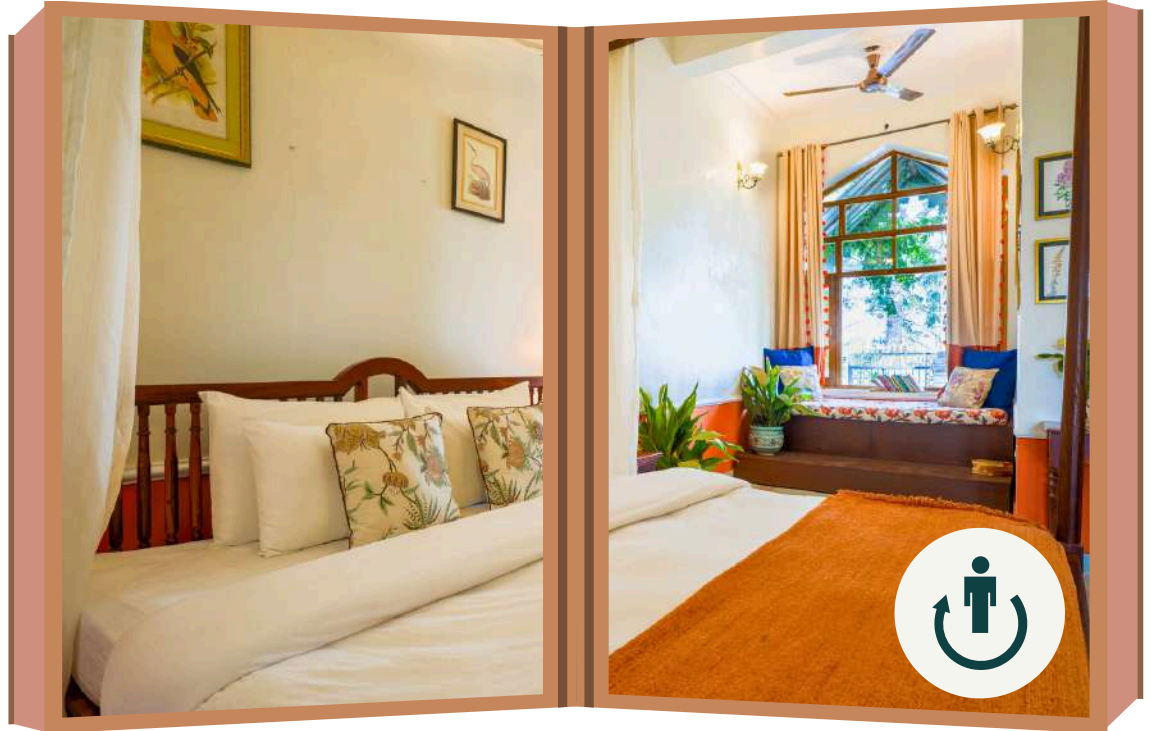


wheel chair accessible

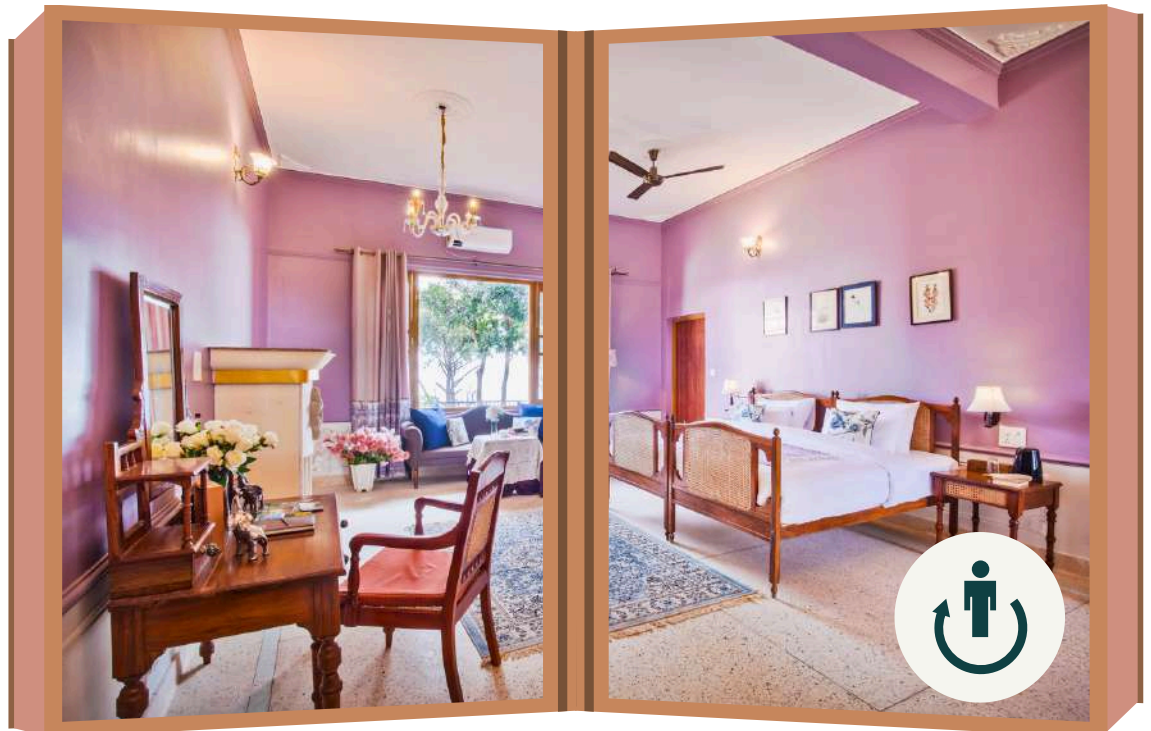
For assistance, you will receive the requirement details after booking with Seclude Or, you may also contact at our corporate office +91-9810743242.

# ROOMS

## PALASH



## BRIJRAJ



Total no. of Rooms 8

# ROOMS

## SHAMSHER SUITE



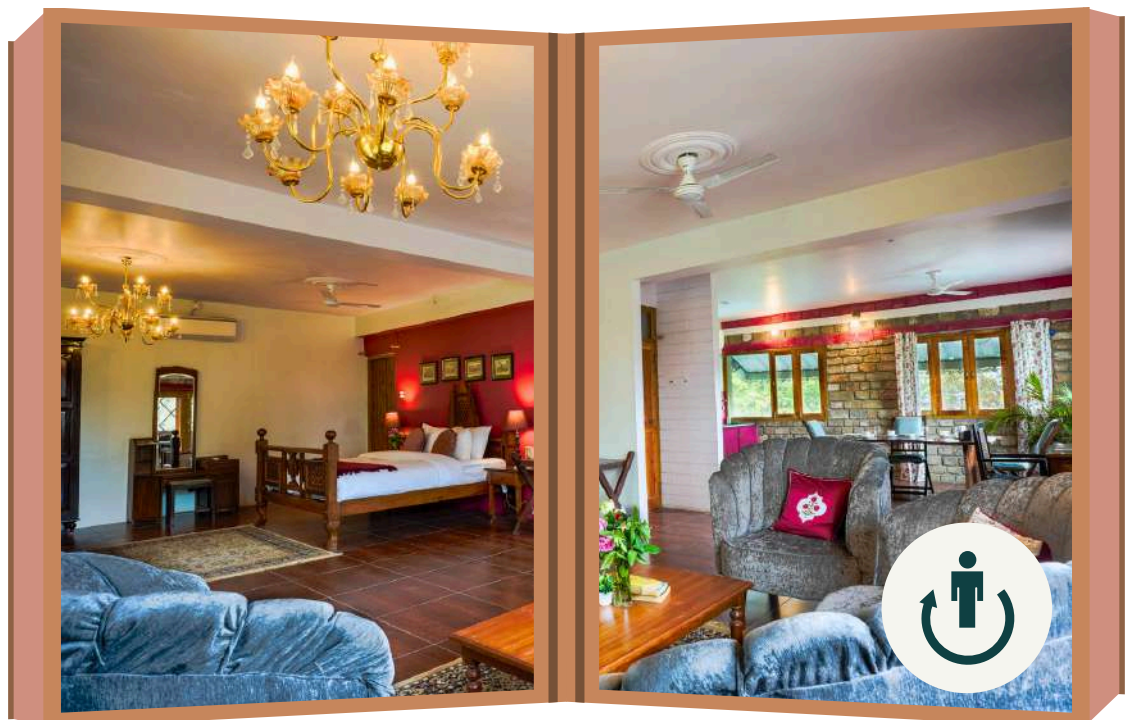
**Total no. of Rooms 8**

# ROOMS

## RAANITAAL



## THE SIRMUR SUITE



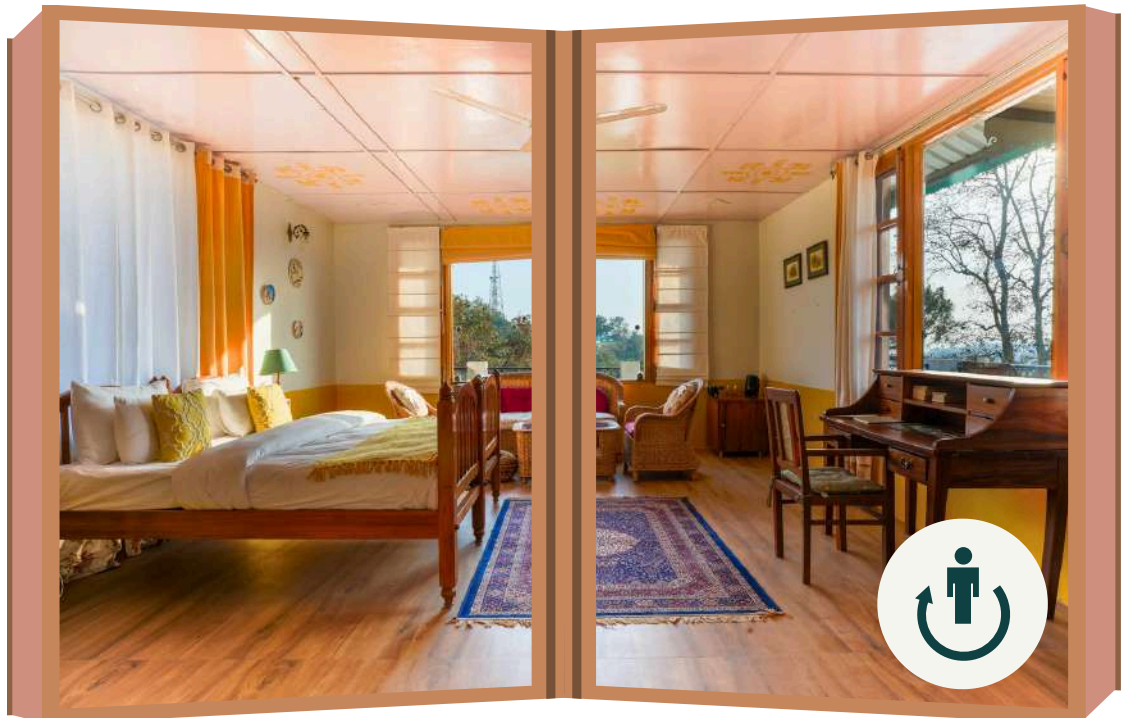
Total no. of Rooms 8

# ROOMS

## THE SIRMUR SUITE



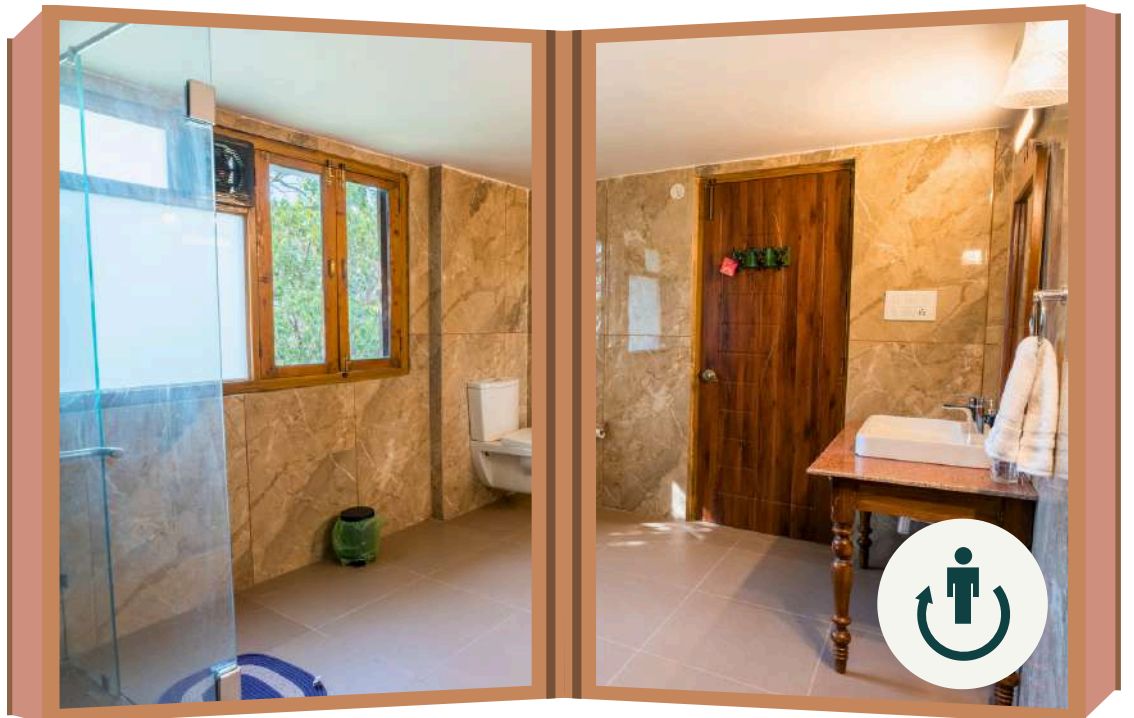
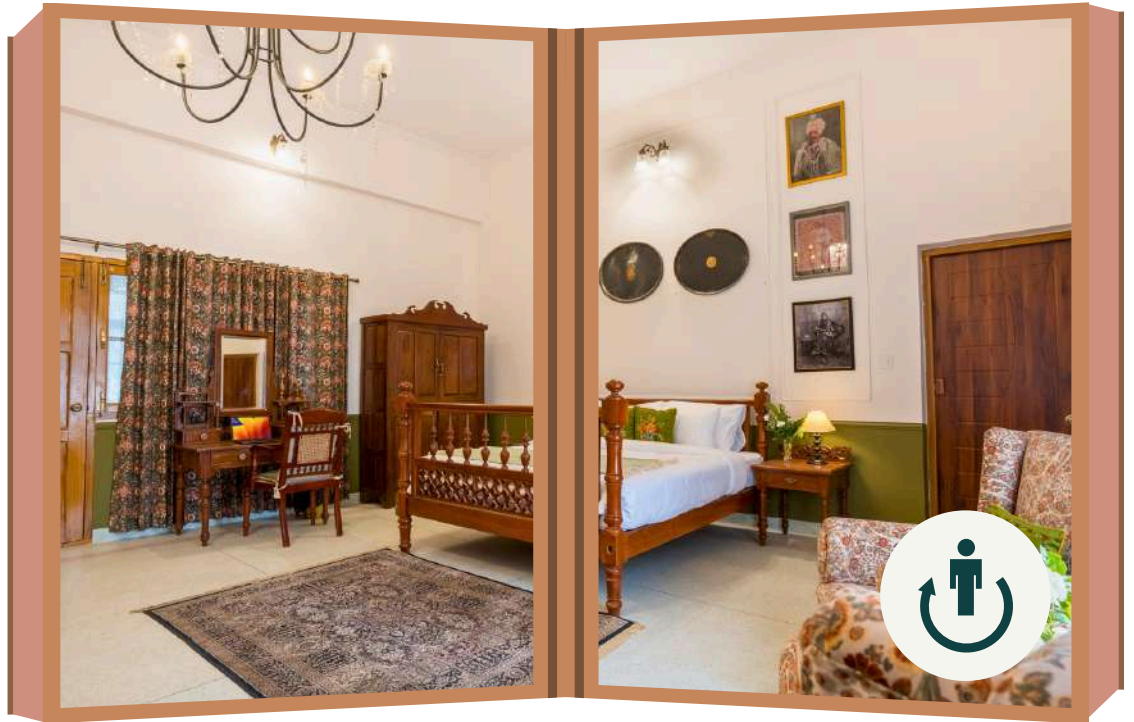
## PRAKASH



Total no. of Rooms 8

# ROOMS

## THE MAHARAJA SUITE



Total no. of Rooms 8



# ROOMS

## THE MAHARANI SUITE



Total no. of Rooms 8

# COMMON AREA

## COMMON AREA



## DINING AREA



**Total no. of Rooms 8**

# COMMON AREA

## CANDLE LIT DINING AND GAZEBO



## GARDEN WITH SEATING



**Total no. of Rooms 8**

# COMMON AREA

## ENTERTAINMENT ROOM



**Total no. of Rooms 8**

# THE SECLUDE TABLE

Choose From Our Types Of Menu



Homestyle Package



A-La Carte Menu



Chef's Special Menu



DINE IN WITH STYLE  
Enjoy the lavish Seclude spread in style



8:am - 10am

Breakfast

1pm - 3pm

Lunch

8pm - 10pm

Dinner



Our Recharge Mode -

All services pause at 10:00 PM &  
resume at 8:00 AM

# SECLUDE EXPERIENCES AT AN ADDITIONAL COST

## CANDLE LIGHT DINNER

Celebrate Love



## MOVIE NIGHT

Night to remember



## BARBEQUE

Chill & grill



## BONFIRE

Light up the night



## BIRTHDAY & ANNIVERSARY

Milestone celebration



Check out [Seclude Experiences](#)





# Amenities

STANDARD AMENITIES

## ROOM AMENITIES

- Geyser
- Wifi
- A/C
- Electric kettle
- Toiletries
- Electric Blanket

## CHARGABLE ADD ONS

- Room Décor
- Movie Night
- Glam Night
- Holistic Retreat
- Karaoke Night
- High tea
- Picnic
- Bonfire

## OTHER POLICIES

Billable items will be deducted from security deposit or additionally billed.

These include:

- Breakage of glassware and crockery.
- Damage to property, furniture and fixtures, linen, etc.

## CHILD POLICIES

<b>0-5YEARS</b>	<b>Complimentary stay without extra mattress</b>
<b>Above 5 years</b>	<b>Extra mattress at Rs1680 each inclusive of taxes</b>

# Policies

-As per Government of India's security regulations, It is mandatory for all guest (including kids) to show a valid **photo identification** (passport for foreigners) at the time of check-in. Please do ensure to carry this with you

- **Check-in time** : 02:00 PM and **Check-out time** : 11:00 AM
- Smoking / Hukkah in the rooms is **not allowed**.
- We encourage **meals** to be served in the **dining area** during the time stated on the menu.
- No outside catering is permitted. Guests do not have access to our kitchen and are not allowed to cook on property. Seclude properties have **standardized menu** and **fully staffed kitchens**. In addition, **specially curated meals** are available for groups with **advance notification/planning**.
- We care about your well being, if you have special needs, **food allergies** etc., please **notify us in advance**. We can discuss the possibilities to accommodate your dietary requirements. Our **last order** for food is **10pm**, and **last service** by **11pm**.
- For your use, we have **guest toiletries** which are refreshed as needed during your stay, but not more than **once in a day**.
- Following our **eco-friendly - water conservation** policy, we change our **bed linens and towels** every **two days**.
- **NOISE ORDINANCE POLICY** : QUIET HOURS begin at **9:30 p.m.** disturbing the peace through loud music or drinking, or **unruly behavior** is **not permitted**. Property manager reserves the right to decide what is loud music and caution the guest to reduce sound levels to personal listening level.