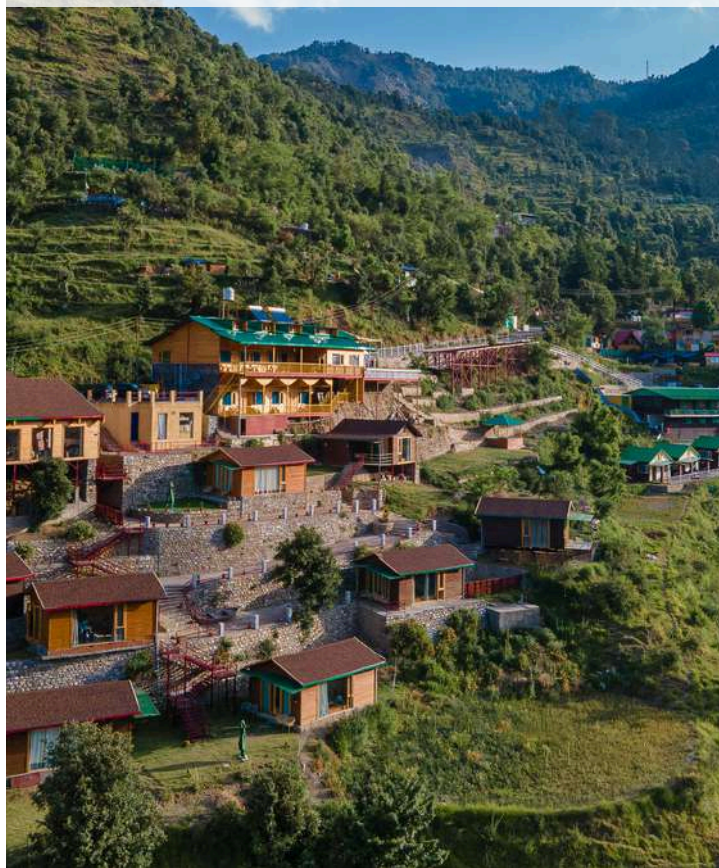




# Seclude Pangot

Pangot Perch





seclude  
hotels home style

## SECLUDE PANGOT PERCH

Nestled in one of India's most popular bird sanctuaries, Seclude Pangot Perch, 12kms from Nainital is an eight cottage resort, perfect for a rejuvenating stay in the hills.

Each of its luxurious private cottages are sprawled across a breathtaking valley, with the strong mountain sun keeping the property warm during the day and a Seclude special bonfire to keep away the winter chills at night.

Perfect for bird watching or just unwinding, Pangot Perch offers all amenities of the modern era with unbeatable Seclude service for all your food and hospitality needs



[Click here](#)

India

# Getting there



Pantnagar Airport - 86 kms away from Seclude Pangot Perch



Delhi is 296 kms away by road from our property.



Kathgodam Railway Station is 67 kms away



Transfers to and from the airport, or railway station (at an additional cost)

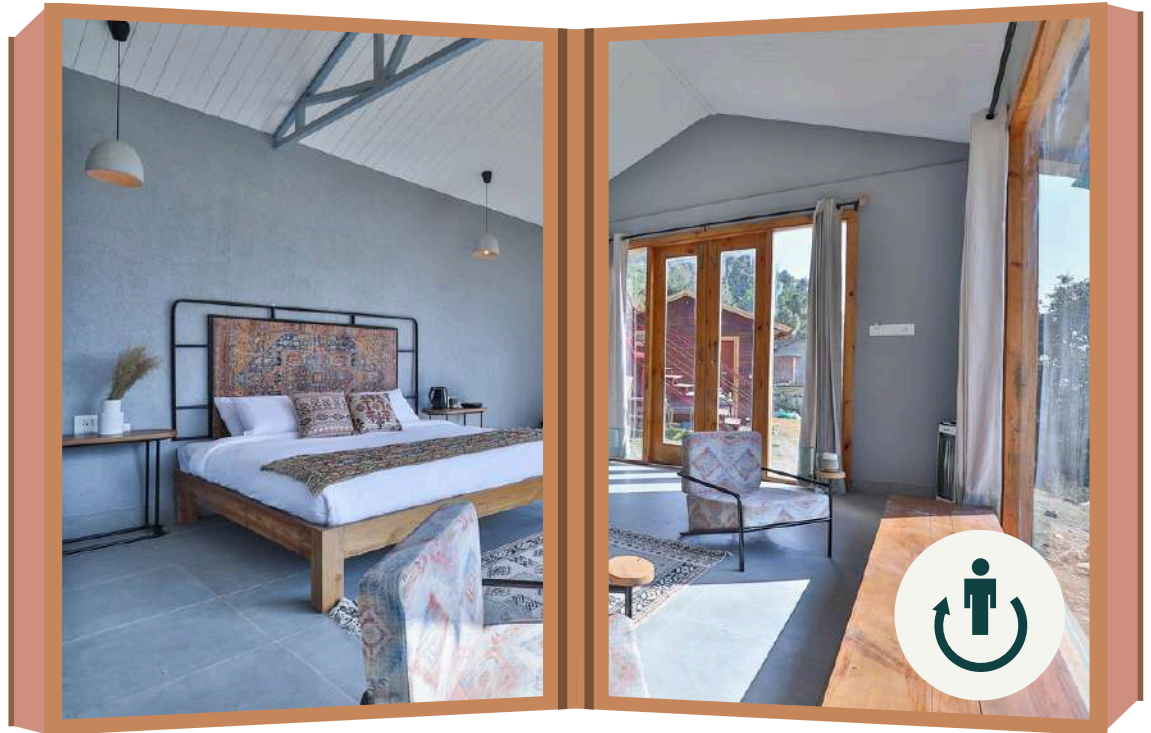


Street parking available

**For assistance, you will receive the required details after booking with Seclude Or, you may also contact at our corporate office +91-9810743242.**

# ROOMS

## QUEENBEE

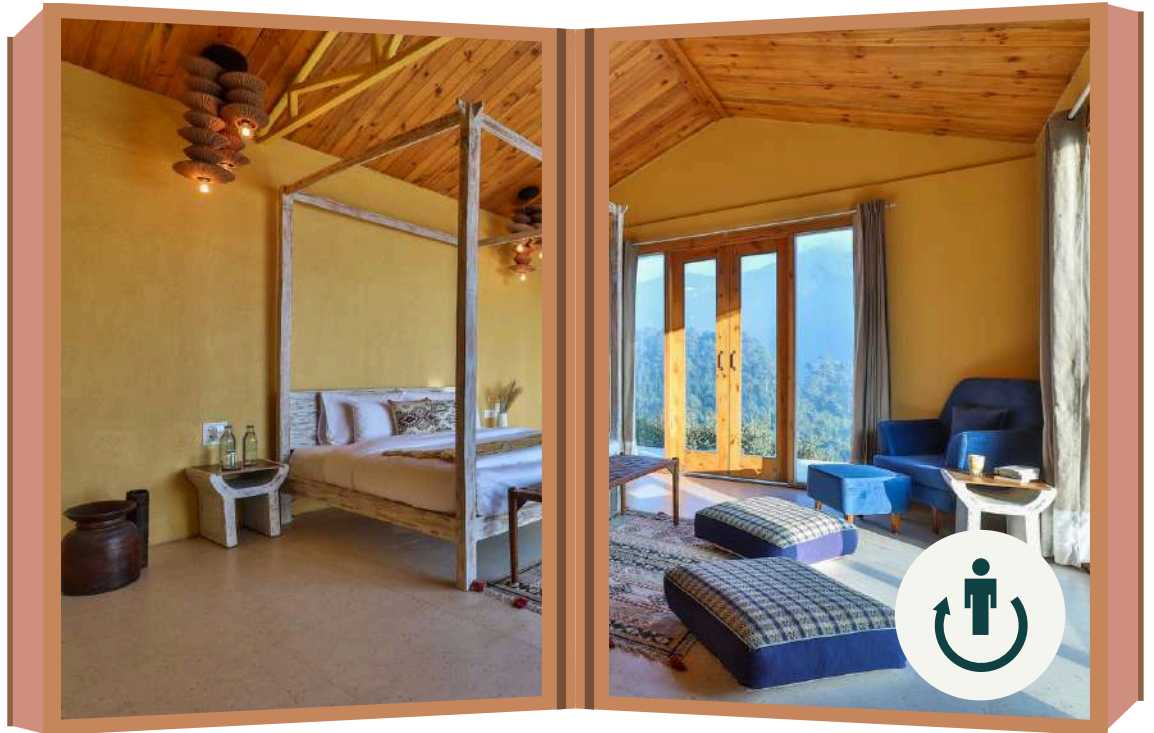


## LADYBIRD



# ROOMS

## FIREFLIES



## BUTTERFLY



8 Cottage Property

# ROOMS

## BLACKBIRD



## GRASSHOPPER



# ROOMS

## DRAGON FLY



## BLUEDASHER



8 Cottage Property

# COMMON AREA

## COMMON AREA

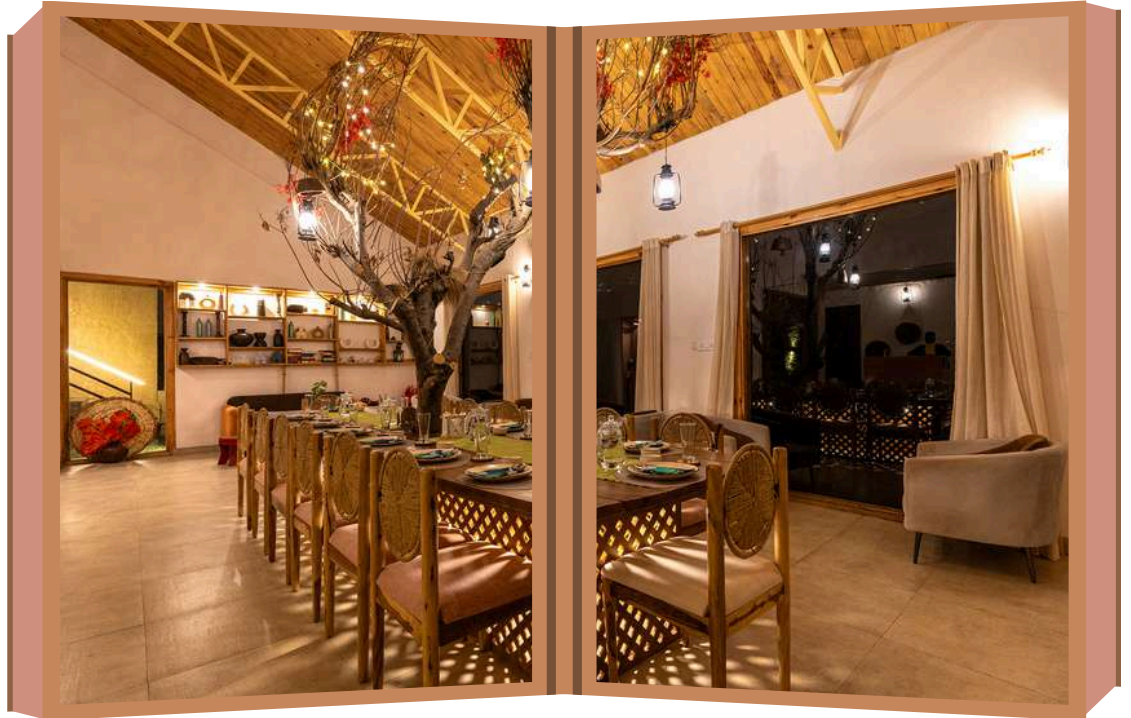


8 Cottage Property



# COMMON AREA

## DINING AREA



8 Cottage Property

# THE SECLUDE TABLE

Choose From Our Types Of Menu



Homestyle Package



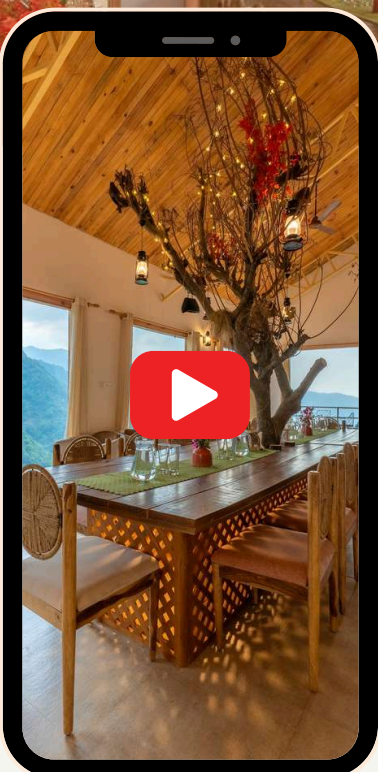
A-La Carte Menu



Chef's Special Menu



DINE IN WITH A VIEW  
Enjoy the meals with nature's beauty



8:am - 10am

Breakfast

1pm - 3pm

Lunch

8pm - 10pm

Dinner



Our Recharge Mode -  
All services pause at 10:00 PM &  
resume at 8:00 AM

# SECLUDE EXPERIENCES AT AN ADDITIONAL COST

## CANDLE LIGHT DINNER

Celebrate Love



## BIRD WATCHING

Nature Expedition



## BARBEQUE

Chill & grill



## BONFIRE

Light up the night



## BIRTHDAY & ANNIVERSARY

Milestone celebration



Check out [Seclude Experiences](#)



# Amenities

STANDARD AMENITIES

## ROOM AMENITIES

- Geyser
- Wifi
- Hair dryer
- Electric kettle
- Toiletries

## CHARGABLE ADD ONS

- Room Decor
- Movie Night
- Glam Night
- Holistic Retreat
- Karaoke Night
- High tea
- Picnic
- Bonfire

## OTHER POLICIES

Billable items will be deducted from security deposit or additionally billed.

These include:

- Breakage of glassware and crockery.
- Damage to property, furniture and fixtures, linen, etc.

## CHILD POLICIES

<b>0-5YEARS</b>	<b>Complimentary stay without extra mattress</b>
<b>Above 5 years</b>	<b>Extra mattress at Rs1680 each inclusive of taxes</b>

# Policies

-As per Government of India's security regulations, It is mandatory for all guest (including kids) to show a valid **photo identification** (passport for foreigners) at the time of check-in. Please do ensure to carry this with you

- **Check-in time** : 02:00 PM and **Check-out time** : 11:00 AM
- **Smoking / Hukkah** in the rooms is **not allowed**.
- We encourage **meals** to be served in the **dining area** during the time stated on the menu.
- No outside catering is permitted. Guests do not have access to our kitchen and are not allowed to cook on property. Seclude properties have **standardized menu** and **fully staffed kitchens**. In addition, **specially curated meals** are available for groups with **advance notification/planning**.
- We care about your well being, if you have special needs, **food allergies** etc., please **notify us in advance**. We can discuss the possibilities to accommodate your dietary requirements. Our **last order** for food is **10pm**, and **last service** by **11pm**.
- For your use, we have **guest toiletries** which are refreshed as needed during your stay, but not more than **once in a day**.
- Following our **eco-friendly - water conservation** policy, we change our **bed linens and towels** every **two days**.
- **NOISE ORDINANCE POLICY** : QUIET HOURS begin at **9:30 p.m.** disturbing the peace through loud music or drinking, or **unruly behavior** is **not permitted**. Property manager reserves the right to decide what is loud music and caution the guest to reduce sound levels to personal listening level.