



# Seclude Shimla

## Shimla Taraview







## SECLUDE SHIMLA TARAVIEW

Seclude Taraview is a heritage property that has passed the test of time. A gentle slope leads down to the reception where you can soak in the rich history of this property. Four rooms, each with its own distinct character, line the first floor. These rooms face an enchanting glazed veranda with the perfect setting to enjoy the Shimla skyline.

Just a few steps below, a charming open veranda leads into the classic dining room, lined with two luxurious rooms on the side. Opposite the open veranda, two regal lion statues guard the flourishing outdoors.

The lush green gardens beside the dining are the ideal spot to enjoy some masala chai or just take in the fresh mountain air. After over 150 years, this majestic bungalow has finally opened its doors to curious guests.



[Click here](#)

Shimla



# Getting there



Shimla Airport Jubbarhatti -23 kms away from Shimla Taraview



Delhi is 415 kms away by road from our property.



Kalka Railway Station - 92 Kms away



Transfers to and from the airport, or railway station (at an additional cost)



Parking available

For assistance, you will receive the required details after booking with Seclude Or, you may also contact at our corporate office +91-9810743242.

# ROOMS

## SUNBEAM



## MILKYWAY



Total No. of Rooms-06



# ROOMS

## COSMOS



## SUPERMOON



Total No. of Rooms-06

# ROOMS

## SHOOTING STAR



## NEBULA



Total No. of Rooms-06



# COMMON AREA

## LIVING AREA



## GLAZE VARENDAH



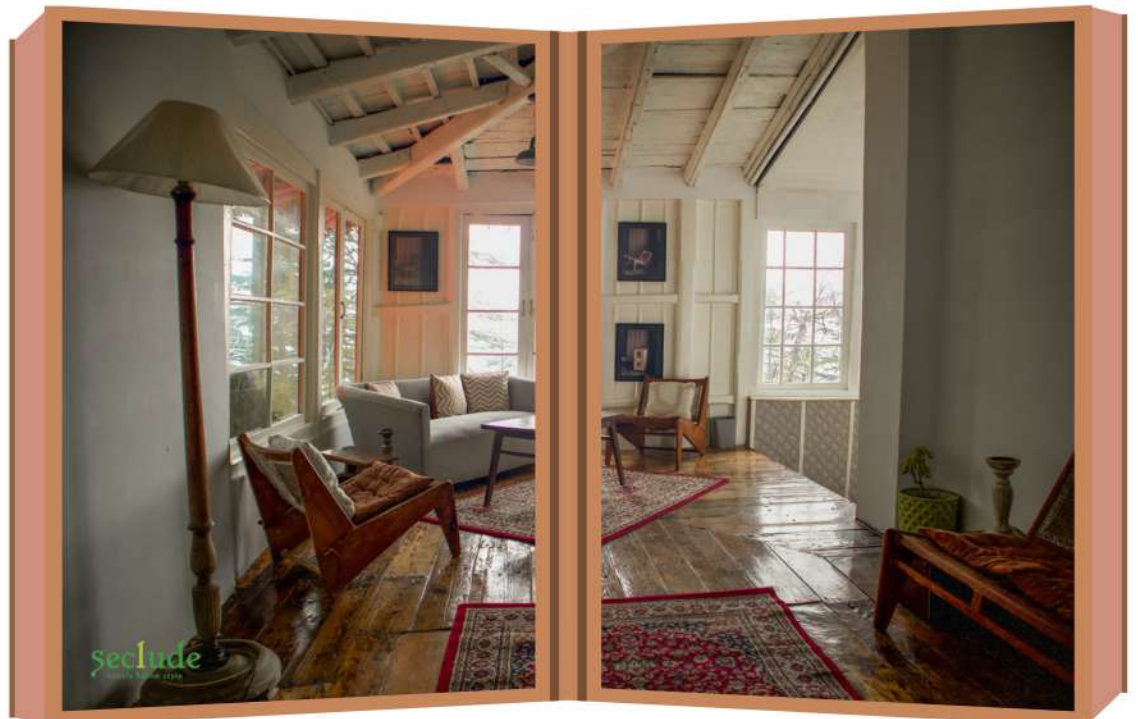
Total No. of Rooms-06

# COMMON AREA

## DINING AREA



## RECEPTION



Total No. of Rooms-06



# THE SECLUDE TABLE

Choose From Our Types Of Menu



Homestyle  
Package



A-La Carte  
Menu



Chef's Special  
Menu

## DINE IN WITH A VIEW

Enjoy the meals with nature's beauty



8:am - 10am

Breakfast

1pm - 3pm

Lunch

8pm - 10pm

Dinner



Our Recharge Mode -  
All services pause at 10:00 PM &  
resume at 8:00 AM



# SECLUDE EXPERIENCES AT AN ADDITIONAL COST

## CANDLE LIGHT DINNER

Celebrate Love



## MOVIE NIGHT

Night to remember



## BARBEQUE

Chill & grill



## BONFIRE

Light up the night



## BIRTHDAY & ANNIVERSARY

Milestone celebration



Check out [Seclude Experiences](#)





# Amenities

## STANDARD AMENITIES

### ROOM AMENITIES

- Geyser
- Wifi
- Hair dryer
- Electric kettle
- Toiletries
- Smart TV

### CHARGABLE ADD ONS

- Bonfire
- Room Decor
- Movie Night
- Glam Night
- Holistic Retreat
- Karaoke Night
- High tea
- Picnic

### OTHER POLICIES

Billable items will be deducted from security deposit or additionally billed.

These include:

- Breakage of glassware and crockery.
- Damage to property, furniture and fixtures, linen, etc.

### CHILD POLICIES

<b>0-5YEARS</b>	<b>Complimentary stay without extra mattress</b>
<b>Above 5 years</b>	<b>Extra mattress at ₹1680 each inclusive of taxes</b>

\*Driver accomodation not available at our property

Prices are available with sales team and the property manager on request. Call 9810743242 to find out about current packages and promotions.

# Policies

-As per Government of India's security regulations, It is mandatory for all guest (including kids) to show a valid **photo identification** (passport for foreigners) at the time of check-in. Please do ensure to carry this with you

- **Check-in time** : 02:00 PM and **Check-out time** : 12:00 NOON
- **Smoking / Hukkah** in the rooms is **not allowed**.
- We encourage **meals** to be served in the **dining area** during the time stated on the menu.
- No outside catering is permitted. Guests do not have access to our kitchen and are not allowed to cook on property. Seclude properties have **standardized menu** and **fully staffed kitchens**. In addition, **specially curated meals** are available for groups with **advance notification/planning**.
- We care about your well being, if you have special needs, **food allergies** etc., please **notify us in advance**. We can discuss the possibilities to accommodate your dietary requirements. Our **last order** for food is **10pm**, and **last service** by **11pm**.
- For your use, we have **guest toiletries** which are refreshed as needed during your stay, but not more than **once in a day**.
- Following our **eco-friendly - water conservation** policy, we change our **bed linens and towels** every **two days**.
- **NOISE ORDINANCE POLICY** : QUIET HOURS begin at **9:30 p.m.** disturbing the peace through loud music or drinking, or **unruly behavior** is **not permitted**. Property manager reserves the right to decide what is loud music and caution the guest to reduce sound levels to personal listening level.