



Seclude Kerala

By the Lake, Alleppey





SECLUDE BY THE LAKE, ALLEYPPEY

Located in the beautiful destination of Alappuzha (Alleppey), Kerala, known for its serene backwaters, 'Seclude – By the Lake' is an affordable luxury stay with breath-taking lake views and door pickups for the quintessential Kerala houseboat and shikara rides.

Seclude by the lake is a three-villa complex on Lake Vembanad, the longest lake in India, and is inspired by the traditional architecture and design of Santorini, Greece, that is admired worldwide for its whitewashed, blue-domed houses and seascapes.

The Villas host four and two bedrooms, combined with a living, dining and a spacious balcony, giving you the comfort of a homestay.

Each of its 10 uniquely designed rooms boasts a vibrant theme equipped with all the modern amenities for the discerning guest; be it vacationing foreign tourists, working getaways, or short stays due to its close proximity to Cochin International Airport.

A host of local and international dining options are also available for guests to enjoy as well as a wide array of activities such as kayaking, cycling, swimming and more!



[Click here](#)

India

Getting there



Cochin International Airport - 72 kms away from Alleyppey



Alleppey is well connected by a network of roads. Auto, bus & boats run on a regular basis from Kochi, Mararikulam, Ernakulam etc.



Mararikulam railway station - 9.5 Kms away



Transfers to and from the airport or railway station (at an additional cost)



Parking available

For assistance, you will receive the required details after booking with Seclude Or, you may also contact at our corporate office +91-9810743242.

ROOMS

BLUE VILLA - 4 ROOMS



COMMON AREA



ROOMS

SUNRISE VILLA - 4 ROOMS

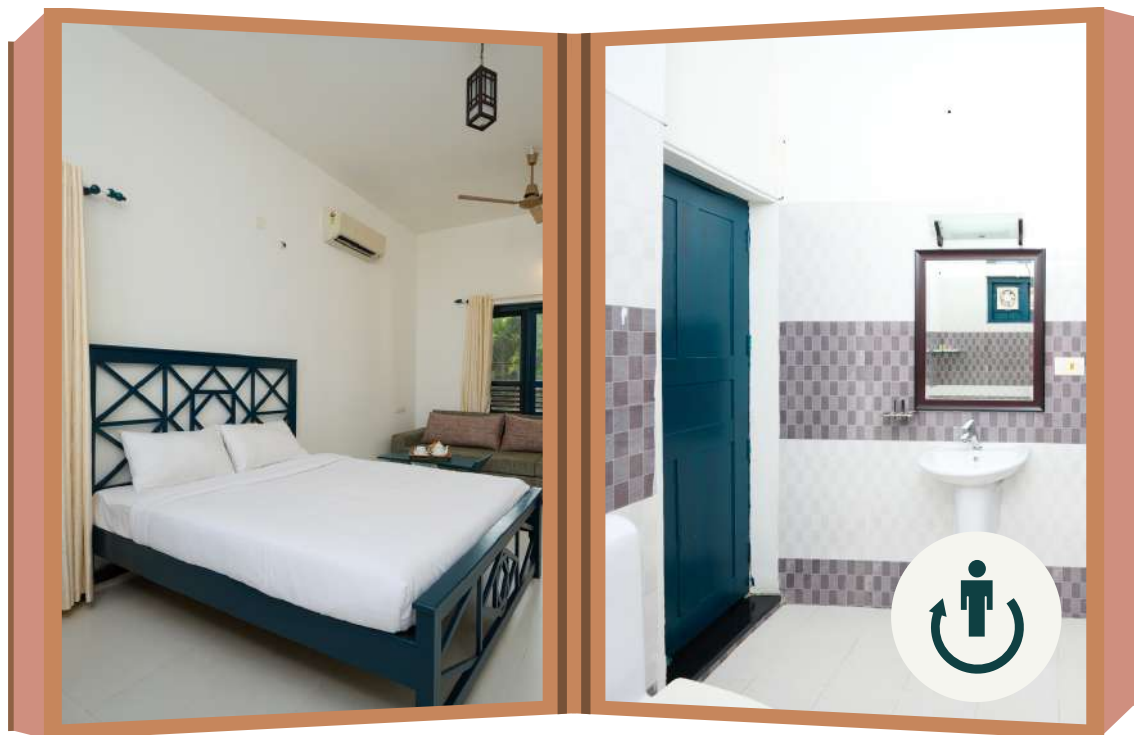


COMMON AREA



ROOMS

GREEN VILLA - 2 ROOMS



COMMON AREA



THE SECLUDE TABLE

Choose From Our Types Of Menu



Homestyle Package



A-La Carte Menu



Chef's Special Menu



DINE IN WITH A VIEW
Enjoy the meals with nature's beauty



8:am - 10am

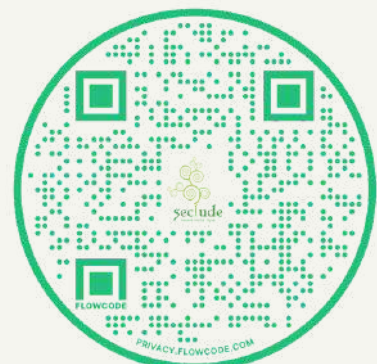
Breakfast

1pm - 3pm

Lunch

8pm - 10pm

Dinner



Our Recharge Mode -
All services pause at 10:00 PM &
resume at 8:00 AM

SECLUDE EXPERIENCES AT AN ADDITIONAL COST

CANDLE LIGHT DINNER

Celebrate Love



SHIKARA RIDE

Sit back & relax



SADYA LUNCH

Discover Kerala
Cuisine



KAYAKING

enjoy the thrill of
splashing waters



BIRTHDAY & ANNIVERSARY

Milestone celebration



Check out [Seclude Experiences](#)



Amenities

STANDARD AMENITIES

ROOM AMENITIES

- A/C
- Wifi
- Hair dryer
- Study table
- Electric kettle
- Toiletries
- TV

CHARGABLE ADD ONS

- Room Decor
- Movie Night
- Glam Night
- Karaoke Night
- Picnic
- High Tea
- Bonfire

OTHER POLICIES

Billable items will be deducted from security deposit or additionally billed.

These include:

- Breakage of glassware and crockery.
- Damage to property, furniture and fixtures, linen, etc.

CHILD POLICIES

0-5YEARS	Complimentary stay without extra mattress
Above 5 years	Extra mattress at Rs1680 each inclusive of taxes

*Driver accomodation not available at our property

Prices are available with sales team and the property manager on request. Call 9810743242 to find out about current packages and promotions.

Policies

-As per Government of India's security regulations, It is mandatory for all guest (including kids) to show a valid **photo identification** (passport for foreigners) at the time of check-in. Please do ensure to carry this with you

- **Check-in time** : 02:00 PM and **Check-out time** : 12:00 NOON
- **Smoking / Hukkah** in the rooms is **not allowed**.
- We encourage **meals** to be served in the **dining area** during the time stated on the menu.
- No outside catering is permitted. Guests do not have access to our kitchen and are not allowed to cook on property. Seclude properties have **standardized menu** and **fully staffed kitchens**. In addition, **specially curated meals** are available for groups with **advance notification/planning**.
- We care about your well being, if you have special needs, **food allergies** etc., please **notify us in advance**. We can discuss the possibilities to accommodate your dietary requirements. Our **last order** for food is **10pm**, and **last service** by **11pm**.
- For your use, we have **guest toiletries** which are refreshed as needed during your stay, but not more than **once in a day**.
- Following our **eco-friendly - water conservation** policy, we change our **bed linens and towels** every **two days**.
- **NOISE ORDINANCE POLICY** : QUIET HOURS begin at **9:30 p.m.** disturbing the peace through loud music or drinking, or **unruly behavior** is **not permitted**. Property manager reserves the right to decide what is loud music and caution the guest to reduce sound levels to personal listening level.