



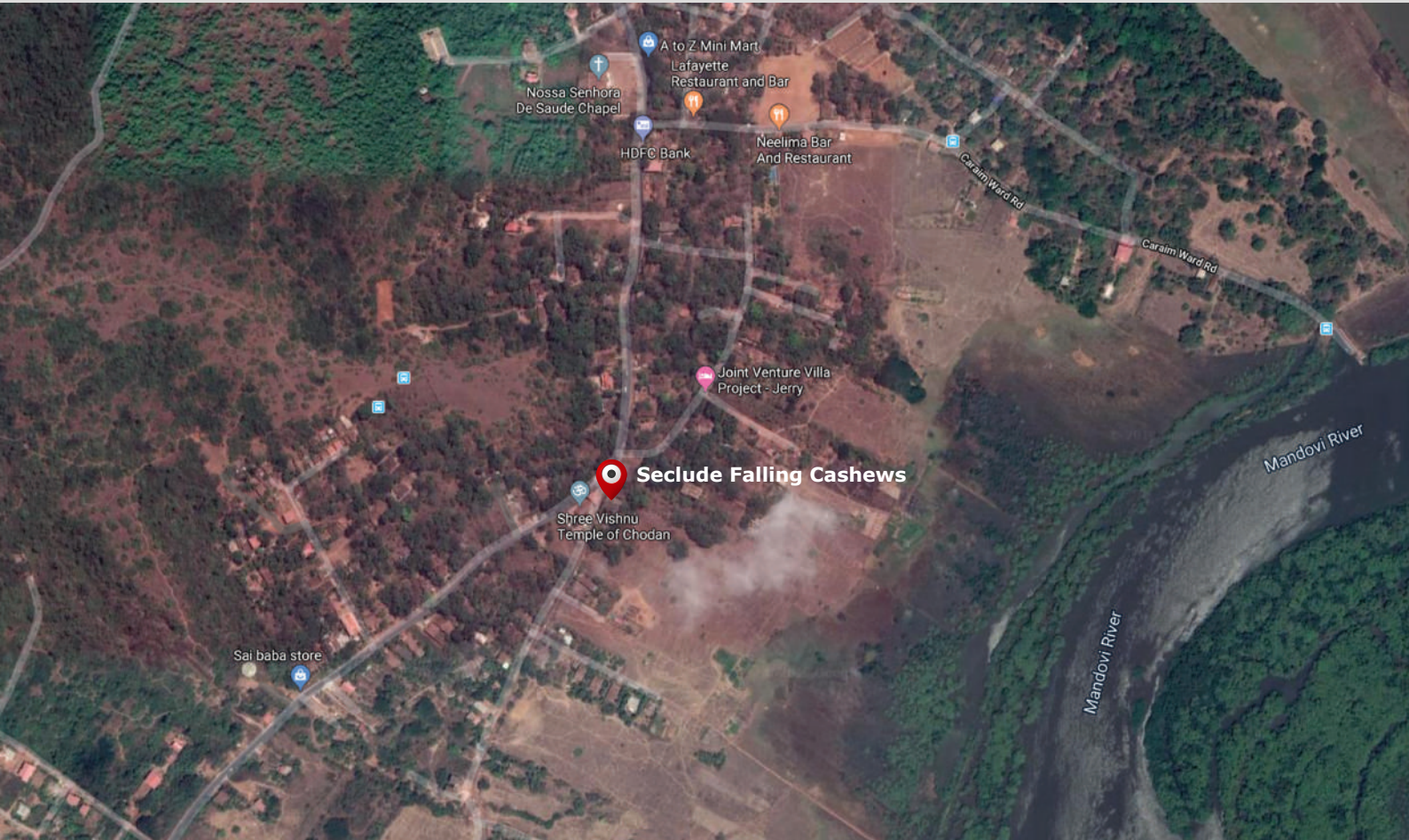
## FACT SHEET - SECLUDE FALLING CASHEWS, CHORAO



A sleepy Goan Village, 10 km from the Capital city, Panjim.. stunning ferry rides.. It's an island along the Mandovi river and houses the famous Salim Ali Bird Sanctuary, St. Bartholomew's church. Break away from your city life with its nerve jarring noises, grime and that constant annoying feeling that you are getting late for an appointment or forgetting something important. Shift gears and get to the Goan 'susegad' way of life, for a few days.

So now, most of Goa has become synonymous with crazy beach parties, clubs, noise, traffic, loud music et al just like any other city. A chilled out and laid back, content existence is nowhere to be seen on the tourist map. The original Goan villas with their heavily borrowed Portuguese architecture have given way to modern apartments and houses.

# LOCATION



## SECLUDE FALLING CASHEWS

House No. 656, Bantona, Chorao, Tiswadi, Goa

Goa- 403102 India

Landmark: Vishnu Temple, Chorao

The Google Pin Location is <https://bit.ly/37MDHoq>

### Transfers

You may contact our **corporate office @ +91-9810743242** for information regarding transfers and getting there.

### Accessibility

It is easily accessible and ground room only.

### Parking

Dedicated parking space available.



## GETTING THERE

### By Air

Dabolim Airport is the nearest international airport. Located about 35 kms from Chorao, it is well connected to all important Indian cities like Delhi, Mumbai, Bengaluru, Chennai and Kolkata etc. Taxis from outside the airport can be easily availed at a nominal price to reach Chorao. However, since Chorao is an island you will have to take a ferry from Ribander. It's a 30 minutes drive from the airport to Ribander ferry point. And another 15 mins to cross the Mandovi river via ferry and then another 10 minutes drive from Chorao ferry point to Seclude Falling Cashews.

### By Train

Goa has two prominent railway stations – Margao (Konkan Railways) 44 kms and Vasco da Gama (South Central Railway) 36 kms from Chorao. Both these are located in South Goa. Taxis from outside the railway stations can be easily availed at a nominal price to reach Chorao. However, since Chorao is an island you will have to take a ferry from Ribander. It's a 1 hour 45 minutes drive from the railway station to Ribander ferry point. And another 15 mins to cross the Mandovi river via ferry and then another 10 minutes drive from Chorao ferry point to Seclude Falling Cashews.

### By Road

Panjim the capital of Goa is 9 km from Chorao. From Panjim you can drive for about 5 kms to Ribander ferry point and then about 3 kms on the ferry till Chorao ferry point. Seclude Falling Cashews is about 2 kms from Chorao ferry point.

### By Ferry

Chorao has two ferry points. The one connecting to Ribander is the main one because of its proximity to Panjim. It is 2 kms from the property. There is another ferry point connecting Chorao to Porvorim and this one is about 3 kms from Seclude Falling Cashews. The ferry service is available at regular intervals and it starts early in the morning at 6:00 AM and is running till well past midnight. The ride is free for passengers and bikes, while there is a nominal fee for cars.



## SECLUDE FALLING CASHEWS, CHORAO

An 80 year old two bedroom Portuguese villa lovingly restored, a love story, an abandoned boat now made into an outdoor bed, A mango tree overpowering the garden, a balcao, a small lily pond, a fresh seafood catch meal, a zillion stars and a bright moon visible from the glass roof openings, the sounds of ripe cashews falling from the tree onto a tiles roof and of course you.

The villa features a huge 420 sq ft bedroom with a king size bed and another 280 sq ft bedroom with two single beds. The dining area features a chic log wood dining table with ethnic wooden benches and planter chairs in the verandah to capture a tropical feel of the place.



Seclude places the well being of everyone as their top priority and has therefore adapted the following measures as per WHO, Hospitality Industry and the local authorities during these tough times.

- ✔ Spaces are being setup keeping social distancing in mind, so that you don't have to share your private holiday space with any other guest
- ✔ Entrance to all private holiday spaces is private
- ✔ All entrances and outside areas are sanitized with a disinfectant on a regular basis
- ✔ All high touch points are cleaned frequently with alcohol and sodium hypochlorite solution
- ✔ All our property managers have been trained by qualified medical professionals to ensure that all necessary steps for COVID prevention are being followed
- ✔ Body temperature of all staff members is monitored on a regular basis and they wear face masks at all times
- ✔ Sanitizers have been placed at entrances and critical contact points and all staff members wash their hands with soap and water frequently
- ✔ Travel history of all guests is taken at the time of booking
- ✔ Guests have to wear face masks and their body temperature is taken at the time of check in. The luggage is disinfected before being allowed inside



## HOUSE RULES & HELPFUL INFORMATION

Falling Cashews is on an island. Finding your way from the airport is easy, provided you have the right directions. An Island taxi can also be hired. Call Videsh: 9823205497.

This is a self catered bungalow. We have provided the finest kitchen ware and equipment, should you wish to cook. You could choose to get your own ingredients. Or inform us a day in advance so we can stock up the kitchen to your desire. Of course this is chargeable on cost. Also, if you are in the mood for some local home cooked fare, Alexy the housekeeper can also cook you a meal on advance notice at a cost.

Should you wish to order, or eat out, there are quite a few restaurants around that serve local food and also the usual snacky fare (menus attached). There is no home delivery, but a pilot (motorcycle taxi) can pick up and deliver your order. Delivery charges are Rs. 60/-. Call Pundlik: 9923966452 or Ramesh: 9765795881.

Seclude has a tie up with Lafayette bar and restaurant. Fatima serves some of the most delectable Goan dishes. But since she makes them all fresh, she requires lead time to cook them with love and care that you deserve.

We are never short of water. But in case the tank runs dry, you need to switch on the motor. The switch is indicated on the switchboard on the front balcao. It takes approximately 20 minutes to fill the tank. So please do not forget to switch it off. Otherwise the motor will burn and you don't want added expenses on your bill because of the damage.

As an effort to save the planet we discourage use of disposable plastic, which is why we have installed an RO filtering system for your convenience in the kitchen.

We request you to not smoke anywhere inside our lovely bungalow. You can, however, smoke in the open air areas.

Close all doors in the evenings you want bugs and gnats visiting your room.

The Lilly pond is to enjoy with your eyes only. Please do not venture inside it. Not even your little finger please.

We have provided the finest cookware, but their health is in your hands. We would appreciate delicate handling just as you do at home. Otherwise, damage charges will be levied on you.

We do not wish to invade your privacy, so please let the housekeeper know what time she could come to clean the premises. It takes about two to three hours to clean the place, including making your bed. Linen is changed every three days.

Please ensure not to lie on the white sheets with fresh temporary tattoos. The stain is non erasable. Any damages will be chargeable.

We have a welcome hamper waiting for you. Enjoy all the goodies, but please leave the basket behind.

If there is anything Team Seclude can do to make you more comfortable please don't hesitate to ask. In case of a grievance please do voice it and give us a chance to fix it. If you've any questions, please feel free to contact our corporate office at +91-9810743242.



## OUR POLICIES

As per Government of India's security regulations, It is mandatory for all guest (including kids) to show a valid photo identification (passport for foreigners) at the time of check-in. Please do ensure to carry this with you .

Check-in time : 02:00 PM and Check-out time : 12:00 NOON

### Early Check-in (subject to availability) -

Our standard check-in time is 2 PM. Early check-in is subject to availability and cannot be confirmed in advance. Extra charges will apply as per the below policy:

| <u>Check-in Time</u>     | <u>Early check-in charges</u>  |
|--------------------------|--|
| Before 6 AM              | 100% charges for one day payable as per standard (not discounted) room rates of the previous day |
| Between 6 AM and 12 Noon | 30% charges payable as per Standard (not discounted) room rates of the previous day              |
| Between 12 Noon and 2 PM | Complimentary  |

\*The above does not include charges for breakfast.

### Late Check-out (subject to availability) -

Our standard check-out time is 12 Noon. Late check-out is subject to availability and cannot be confirmed in advance. Extra charges will apply as per the below policy:

| <u>Check-out Time</u>    | <u>Early check-in charges</u>                          |
|--------------------------|--|
| Until 12 Noon            |  |
| Between 6 AM and 12 Noon | 30% charges payable as per room rates of the next day  |
| After 5 PM               | 100% charges payable as per room rates of the next day |



## STANDARD AMENITIES

Ensuite bathroom

Projector

Sound box

Kitchenette with OTG

Electric Kettle

Refrigerator

Air Conditioner

Microwave

Geyser

Iron

Maid service

## GUEST POLICIES

Smoking / Hukkah in the rooms is not allowed.

Following our eco-friendly, water conservation policy - we change our bed linens and towels every two days, should you want it daily, we can accommodate your request for nominal charge of Rs. 450/- per service. Please notify the Manager to arrange additional service.

For your use, we have selected handcrafted Osadhi natural guest toiletries which are refreshed as needed during your stay, but not more than once in a day. Should you require additional product, you can purchase them via the property Manager at the listed price on the product.

We provide daily housekeeping service.

Guests are required to adhere to the noise ordinance policy as per individual property.

Any breakage or damage of any items in the property will be charged as 'actuals'.

**Billable items will be deducted from security deposit or additionally billed. These include:**

- Breakage of glassware and crockery.
- Damage to property, furniture and fixtures, linen, etc.

### Child Policy

|               |   |
|---------------|---|
| Below 5 years | Complementary stay without extra bed, on existing bed |
| 6-18 years    | Rs.1680/- each with breakfast and taxes               |

Call 9810743242 to find out about current packages and promotions.





## CANCELLATION POLICY

### A. Standard Rate (SR)

**Cancellation Policy :** In case of cancellation, out of the total tariff of the entire period booked:

- For period more than 15 days before the date of booking- 100% refund
- For period of 7 days to 14 days before the date of booking- 50% refund
- For a period less than 7 days from the date of booking- No refund
- No shows will be treated as 100% cancellation – no refund
- Cancellations refund of Credit card and online payments will be charged 5% extra. It takes about 15 days to process such refunds.
- In the event of part cancellation of the reservation (i.e. reduction in duration or number of rooms), the above cancellation policy will apply on a pro-rata basis.

\* **Seclude Covid19 Policy** - In case of Government advisory changing and we are unable to take guests on arrival due to Covid 19 rules of the departing state of the guest or the rules of the state where the hotel is situated, the booking amount will be adjusted as a “Hotel Credit” which can be used for any future booking dates (subject to availability) for a period on 6 months from the date of the original check in date.

### B. Non Refundable Rate (NRR) (Discounted Rate – on DISCOUNT OF %)

**Cancellation Policy :** In case of cancellation of a booking made of a Non Refundable Rate amount, the total tariff is to be paid in advance at the time of confirming the booking and is non-refundable.

\* **Seclude Covid19 Policy** - In case of Government advisory changing and we are unable to take guests on arrival due to Covid 19 rules of the departing state of the guest or the rules of the state where the hotel is situated, the booking amount will be adjusted as a “Hotel Credit” which can be used for any future booking dates (subject to availability) for a period on 6 months from the date of the original check in date.

**Note:** Any “Hotel Credit” will be adjusted against the rates applicable on the revised date of travel and for the Seclude Property selected.